

# Poland



# General Features

Republic

9. by size in Europe

38.5 million inhabitants

5 most populous country

EU member

Warsaw-capital

It borders Lithuania and Roussillon to the northeast, Belarus and Ukraine to the east, Slovakia and the Czech Republic to the south, and Germany to the west.



# Geographical features

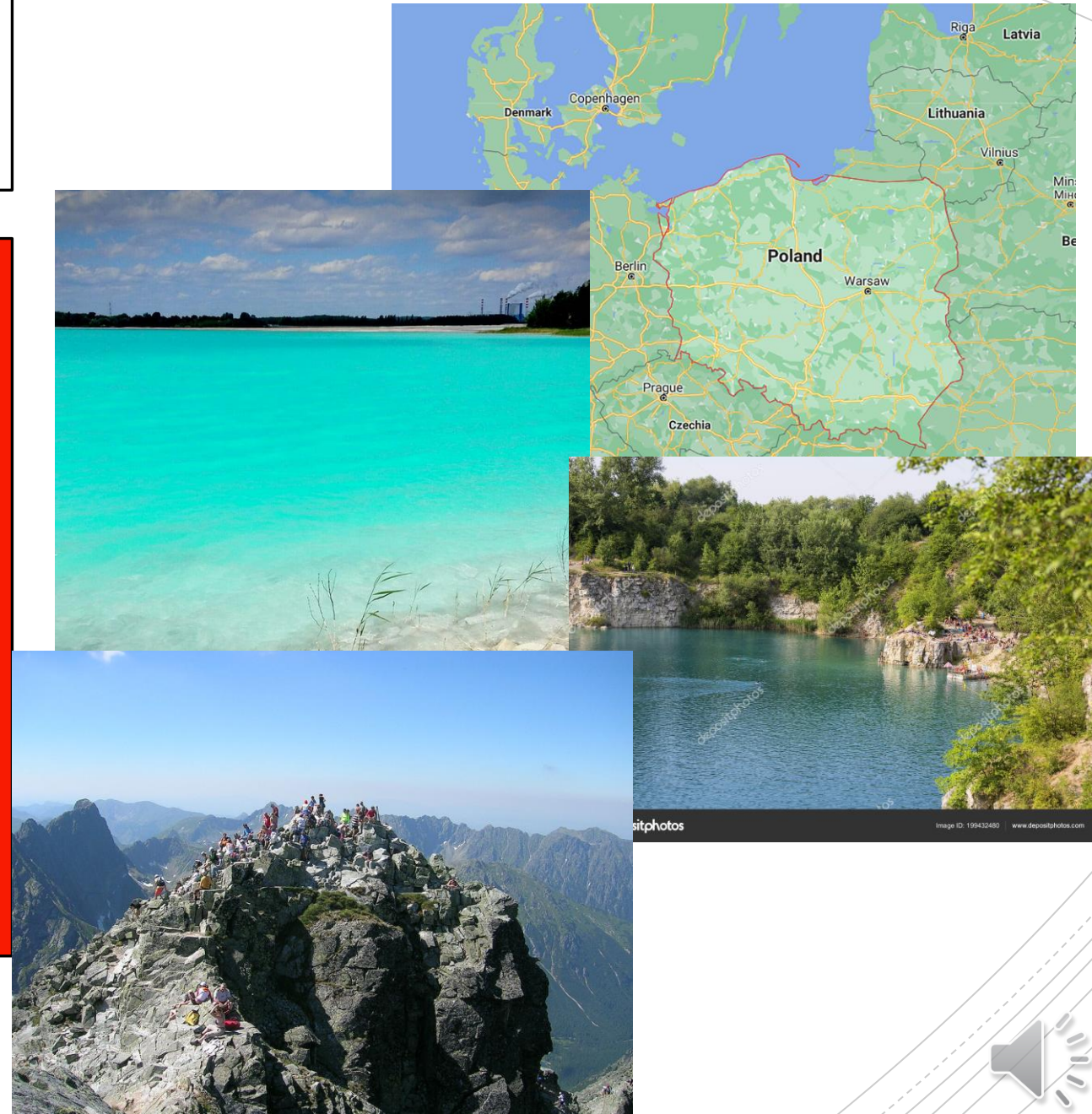
Lowland state

Poland covers an area of approximately 312,696 km<sup>2</sup>

The shores of the Baltic Sea are covered with swamps and full of lagoons

Mountainous areas-in the southwest

Lynx-2500m



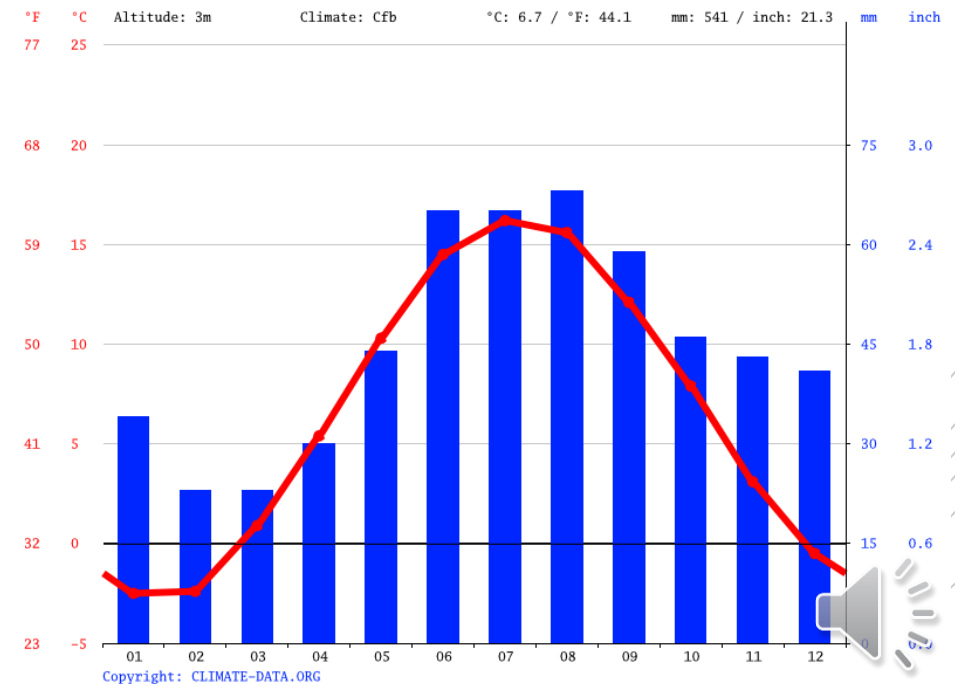
# Climate

Most have a moderately-warm humid climate with warm summers

Very cold and dry winters

Towards the east and mountainous areas the climate transitions into a humid snowy forest with warm summers

The coastal area is wetter with milder winters and cool summers (due to the influence of the sea)



# Population

38.5 million inhabitants

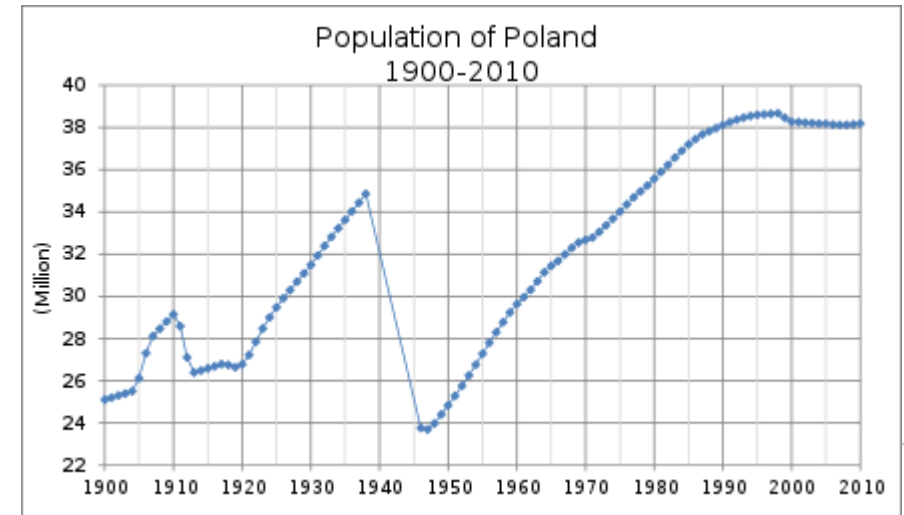
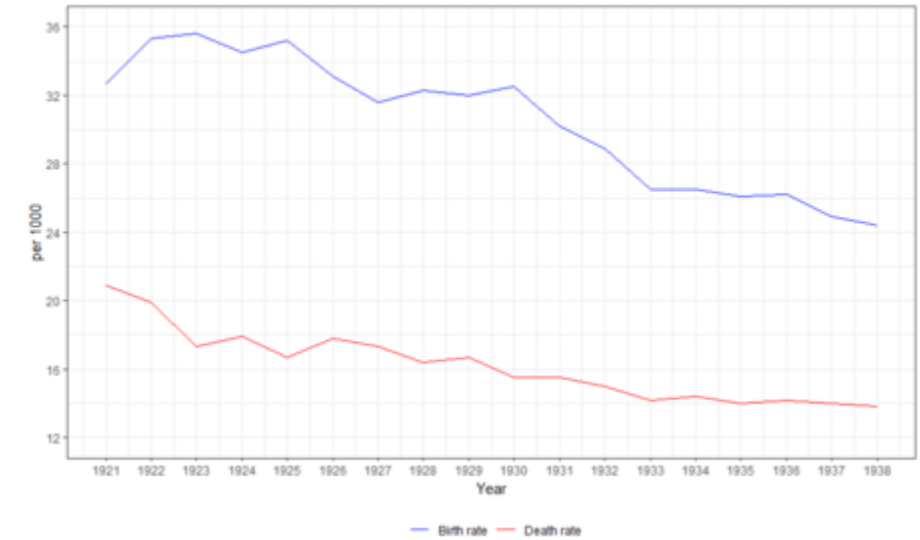
97% of the Polish population

Emigrants mostly live in the United States and the former Soviet Union

The most densely populated area is southwest (Silesia)

The least populated area is the Baltic Sea and lake areas in northeastern Poland

The most widespread is the Catholic religion



# Rivers and lakes

Wisla-1022km

Śniardwy-the largest lake

Ełk Lake-the most famous lake



# Economy

Tourism

Agriculture

Raising pigs and cattle

agriculture



# Warsaw

Over 1 million inhabitants

Capital city

Area 516.90 km<sup>2</sup>

it is located in the middle part of the Vistula in the central Masovian lowlands.

The capital since 1596





# Tradition

Rope-open sandwich

Poprawiny-second wedding

Fat black donuts

Śmigus-dyngus-wet Monday

Drowning Marzanne-the first day of spring



# THE END



Made by:Nina Lucija Horvat